



Educator



Wilkes-Barre - 87 N. Main St.
(570) 825-9950
All Credit Union Services / Lending

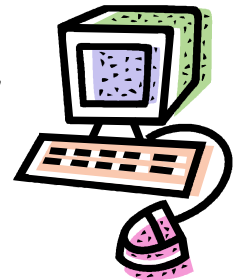
Wyoming - 800 Wyoming Ave.
(570) 693-4073
Teller Services / Debit Card Questions

Dallas - Church Street
(570) 675-8244
Teller Services

CU-At-Home, our online account system, is ready for sign-ups!

Some of the features available:

- Account balances and history
Lose your statement? Want to check your direct deposit? Did a check clear? Just look it up!
- Transfers/recurring transfers between credit union accounts
Make a one-time transfer, or even set up automatic payment of your loan.
- Balance notifications/transfer notifications
Receive a text message or email if your account drops below a certain balance or you have an overdraft!



You may sign up for CU-At-Home either on the phone or in person (not by answering machine, mail, or email). To access the system after you've registered with us, go to <http://www.creducomp.com> and choose your credit union. On the W-BEE homepage, click on the CU-At-Home logo. If you have any questions about the system, please speak with Wendy in Wilkes-Barre or Lisa in Wyoming.

We hope you will find this service to be a convenient way to monitor your credit union accounts. On our website, you can also find our current loan and savings rates, printable loan applications, and office locations and hours. Check it out!

<http://www.creducomp.com>

70th Annual Meeting & Dinner

Date: Wednesday, May 7, 2008

Place: A Touch of Class
George Street, Wilkes-Barre
(formerly Golden Palace)



Cost: \$25 per couple for member + 1 guest
\$25 per person for non-members

5:30-6:30PM Hors D'Oeuvres & Open Bar
6:30-7:30PM Dinner Buffet
7:30PM Meeting

Dinner Details:

Tossed Salad, Cole Slaw, Macaroni Salad
Pork Chops, Chicken Cordon Bleu, Stuffed Haddock
Green Beans Almondine, Stuffed Baked Potato
Fresh Strawberry Shortcake

Please respond by Monday, April 28, 2008.

We want to see you there!

W-BEE FCU Annual Meeting Dinner Reservation

*Yes, I'd like to attend a nice dinner while
shaping the future of my credit union!*

Please reserve _____ places for me at the dinner.

Select one:

_____ Please deduct the cost from my savings account
_____.

_____ A check payable to W-BEE FCU is enclosed.

Name: _____
(please print)

Signature: _____



SAVINGS RATES

RATES PAID FOR THE QUARTER ENDED 3-31-08

<u>\$ Balance</u>	Regular Shares (Savings)	
	<u>APR*</u>	<u>APY**</u>
Under \$300.00	none	none
\$300 - \$4,999.99	1.750%	1.762%
\$5,000 - \$9,999.99	2.375%	2.396%
\$10,000 - \$24,999.99	3.000%	3.034%
\$25,000 - \$49,999.99	3.250%	3.290%
\$50,000 Up	3.500%	3.546%
Christmas Share Accounts (on all accounts \$100 and up)	1.750%	1.762%
Share Drafts (Checking)		
Under \$1000.00	none	none
\$1,000 - \$4,999.99	0.750%	0.752%
\$5,000 Up	1.500%	1.508%

PLEASE NOTE: Savings rates are computed based on the average monthly account balance for all types of share accounts. For regular share accounts, an account may earn dividend credit at multiple rates if the average monthly balance falls into different tiers during each month of the quarter. For share draft accounts, dividends are posted on a monthly basis. **A Truth in Savings disclosure covering all types of share accounts is available upon request. Contact our office for further information.**

* APR = annual percentage rate

** APY = annual percentage yield



*Home equity loans
as low as 4.90%*

*Share secured loans
as low as 4.60%*

*Signature loans
as low as 7.50%*

Loans!

Now is the time!

Car loans:

*2006 and newer as low as 4.60%
2003-2004-2005 as low as 5.25%
2000-2001-2002 as low as 5.90%*

Loan protection insurance
(life insurance on loans)
provided at no cost to members
under age 70 up to \$15,000.*

*Excludes home equity loans

Call Roger or Linda at 825-9950 for an appointment!